



16-Port 10/100/1000Mbps Industrial Managed Ethernet Switch with 2 SFP Uplink



IES7511-16GE2GF-DC



IPv6/IPv4
ACL/QoS

802.1Q
VLAN

Key Features:

Ports: Provide 16*10/100/1000Mbps Ethernet ports with 2*1000Mbps SFP

Self-adaption: RJ45 port supports 10/100/1000Mbps Auto MDI/MDIX

Industrial Installation: Din Rail mounting installation

Wide Application: Designed for Railway, traffic etc some Industrial environment

Surge protection: Protect the device from lightning surges and others electrical hazards

Managed: Support remote web managed, VLAN and storm control and IPV6 management etc.

Working Temperature: -40 to 85 degrees operating temperature

Considerate Design: IP40 Industrial design with dual power input

Environmentally Hardened Design

With the **IP40** metal industrial case which provides a high level of immunity against electromagnetic interference and heavy electrical surges, Being able to operate under the temperature range from **-40 to 85 degrees C**, the IES7511-16GE2GF-DC can be placed in almost any difficult environment.



Working Temperature

-40°C 85°C

Wide temperature design

work well in different harsh environment

Cost-effective IPv6 Managed Gigabit PoE Switch Solution

With layer 2+ managed Gigabit Ethernet Switch, It provides IPv6/IPv4 management and built-in L2/L4 Gigabit Switching engine, and supports high-speed transmission of surveillance images and videos.

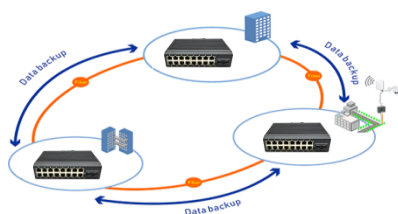
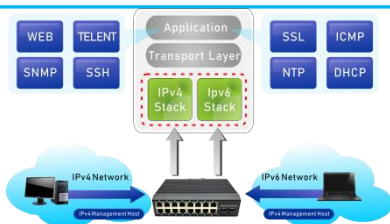
Surge Protection Design

provides contact discharge of $\pm 8\text{KV}$ DC and air discharge of $\pm 15\text{KV}$ DC for Ethernet ESD protection. It also supports $\pm 6\text{KV}$ surge immunity to improve product stability and protects users' networks from devastating ESD attacks, making sure the flow of operation does not fluctuate.



Comprehensive reliability mechanisms(ERPS)

Besides STP, RSTP, and MSTP, the IES7511 Series Managed Ethernet Switch supports enhanced Ethernet reliability technologies such as Ethernet Ring Protection Switching (ERPS), also referred to as G.8032. ERPS supports various services and allows flexible networking, helping customers build a network with lower OPEX and CAPEX.



IES7511-16GE2GF-DC

16-Port 10/100/1000Mbps Industrial Managed Ethernet Switch with 2 SFP Uplink

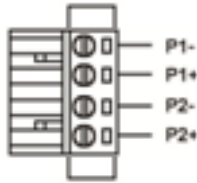
Technical Datasheet

Model	IES7610-16GE2GF-DC		
Hardware Specifications			
Connector	16* 10/100/1000BASE-T RJ45 auto MDI/MDIX ports 2* 1000 Base-X SFP Slots 1 Console port		
Ethernet Port	16* 10/100/1000Mbps Ethernet port		
LED Display	Power Indicator: PWR(green).Network Indicator: Link(yellow) Sys Working Indicator: Green		
Thermal Fan	Fanless Design		
Installation	Din Rail		
Switch Architecture	Store and Forward		
Transmission model	IEEE802.3X full-duplex and Backpressure half-duplex		
Switch Performance	Backplane bandwidth	48Gbps	
	Packet forwarding rate	27Mpps	
	MAC address	8k	
Power requirement	DC 12V~36V		
ESD Protection	6KV ESD		
Dimension(WxDxH)	50mm x110mm x 180mm(1.97in x 4.33in x 7.9in)		
Weight	<1.32kg		
Layer 2 Functions			
Port Mirroring	TX / RX / both Many-to-1 monitor		
Vlan	802.1Q tagged-based VLAN		
	Up to 256 VLAN groups, out of 4094 VLAN IDs		
	802.1ad Q-in-Q tunneling		
	Voice VLAN;Protocol VLAN;Private VLAN (Protected port),GVRP		
Link Aggregation	IEEE 802.3ad LACP and static trunk		
	Supports 8 groups of 8-port trunk		
Spanning Tree Protocol	STP, IEEE 802.1D Spanning Tree Protocol		
	RSTP, IEEE 802.1w Rapid Spanning Tree Protocol		
	MSTP, IEEE 802.1s Multiple Spanning Tree Protocol		
Industrial Ring	G.8032 (ERPS),Recovery time less than 20ms		
	250 Ring at most, Max 1024 devices per ring		
IGMP Snooping	IGMP (v2/v3) snooping		
	IGMP querier		
	Up to 256 multicast groups		
MLD Snooping	MLD (v1/v2) snooping, up to 256 multicast groups		
Access Control List	IPv4/IPv6 IP-based ACL / MAC-based ACL		
Management	Open or close port		
	Standard scheduling management Power and current display		
	Automatic restarting function of equipment dead machine Timing		
	Support IP bindings restarting		
QoS	8 mapping ID to 8 level priority queues		
	--- Port number		

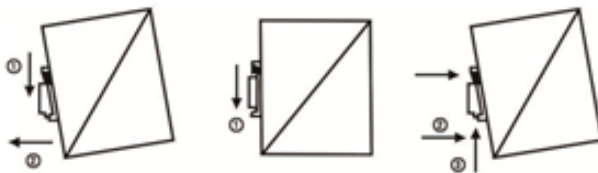
Security	---	802.1p priority
	---	802.1Q VLAN tag
	---	DSCP field in IP packet
		Traffic classification based, strict priority and WRR
		IEEE 802.1X port-based authentication
		Built-in RADIUS client to co-operate with RADIUS server
		RADIUS / TACACS+ user access authentication
		IP-MAC port binding
		MAC filtering
		Static MAC address
		DHCP Snooping and DHCP Option82
		STP BPDU guard, BPDU filtering and BPDU forwarding
		DoS attack prevention
Management Function		ARP inspection
		IP source guard
Basic Management Interfaces		Web browser / Telnet / SNMP v1, v2c, V3
		Firmware upgrade by HTTP / TFTP protocol through Ethernet network
		Remote / Local Syslog, System log, LLDP protocol, SNMP
Secure Management Interfaces		SSH, SSL, SNMP
		RFC 1213 MIB-II
SNMP MIBs		RFC 1215 Generic Traps
		RFC 1493 Bridge MIB
		RFC 2674 Bridge MIB Extensions
		RFC 2737 Entity MIB (Version 2)
		RFC 2819 RMON (1, 2, 3, 9)
		RFC 2863 Interface Group MIB
Environment		RFC 3635 Ethernet-like MIB
Safety		FCC Part15 Class A, CE, RoHS
Environment specification		Operating temperature: -40℃~85℃, operating humidity: 5%~95%
		Storage temperature: -40℃~85℃, storage humidity: 5%~95%

Installation Models

Power Terminal

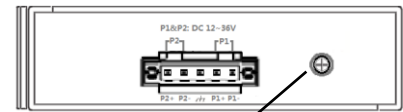


- ◆ 4-pin 3.81mm-spacing plug-in terminal
- ◆ 12V-36VDC wide voltage input
- ◆ P1&P2 dual power input
- ◆ Reverse protection



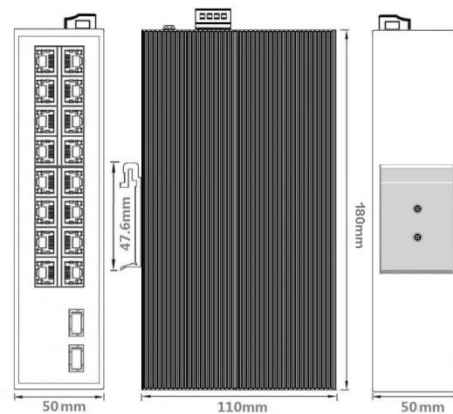
Din-Rail

Earth Protection

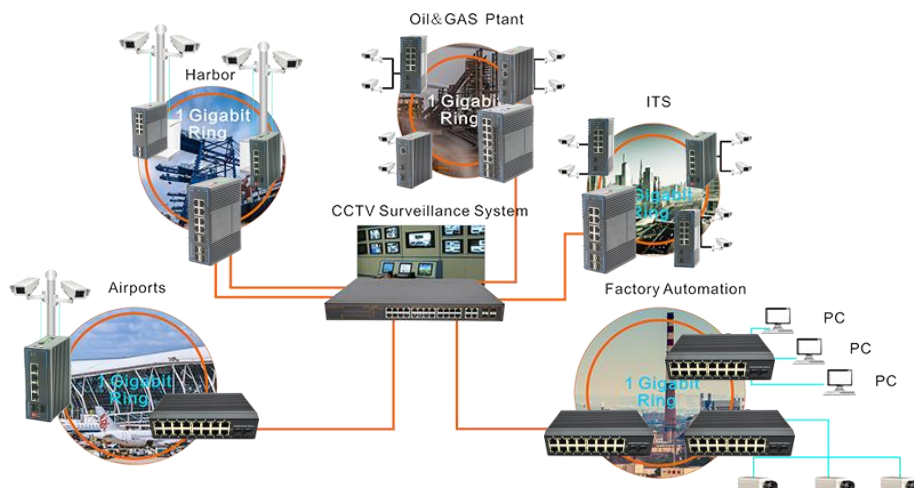


Ground terminal or screw

Mechanical Drawing



Applications



Ordering Information

IES7511-16GE2GF-DC	16 Ports 10/100/1000Mbps Industrial Managed Ethernet switch With 2 SFP, Din rail
--------------------	--