



24-Port 10/100/1000Mbps

Managed Switch with 4-1000M

SFP and 4-10G SFP+ Extend

IPv6/IPv4
ACL/QoS

MSTP
RSTP

6KV
Lightning Protection



S7500-24G4FC-4X-L2M+

Key Features:

Ports: Provide 24*10/100/1000Mbps Ethernet ports with 4*1000M SFP and 4*10G SFP+ Uplink

Self-adaption: RJ45 port supports 10/100/1000Mbps Auto MDI/MDIX

Fiber Port: 4* 1000Mbps SFP and 4*10G SFP+

Wide Application: Designed for Wifi AP and IP Security camera.VoIP etc

Managed: Support remote web managed,VLAN and storm contro and IPV6 managementl etc.

Surge protection: Protect the device from lighting surges and others electrical hazards

Installation: Rack mount with easy installation

S7500 Series Layer 2+ 10GE Static Routing Switch

Benchu Group S7500-L2M+ series switches are L2+ 10G Switches based on new generation of high-performance hardware and Benchu Operating System Platform (TOS). It provides a large capacity, high-density GE interfaces,and 10GE uplink interfaces. With extensive service features and IPv6 forwarding capabilities, the S7500-L2M+ series switches is applicable to various scenarios. For example, it can be used as an access or aggregation switch on campus networks or an access switch in data centers. The S7500-L2M+ series switches integrates many advanced technologies in terms of reliability, security, and energy saving. It employs simple and convenient means of installation and maintenance to reduce customers' OAM cost and help enterprise customers build a next-generation IT network.

Comprehensive QoS policies and security mechanisms

The S7500-L2M+ supports strict ARP learning, which prevents ARP spoofing attacks that exhaust ARP entries,The S7500-L2M+ also provides IP source guard to prevent DoS attacks caused by MAC address spoofing, IP address spoofing, and MAC/IP spoofing.

The S7500-L2M+ supports DHCP snooping, which generates user binding entries based on users' access interfaces, MAC addresses, IP addresses, IP address leases, and VLAN IDs. DHCP snooping discards invalid packets that do not match any binding entries, such as ARP spoofing packets and IP spoofing packets.This prevents hackers from using ARP packets to initiate man-in-the-middle attacks on campus networks.The interface connected to a DHCP server can be configured as a trusted interface to protect the system against bogus DHCP server attacks.

Easy deployment and maintenance free

Supports SNMP v1/v2/v3 and provides flexible methods for managing devices. Users can manage the S7500-L2M+ using the CLI and Web NMS. Supports SSH2.0 and other encryption, which makes management much more secured. Supports LLDP protocol for simpler management.

S7500-24G4FC-4X-L2M+

24 ports Gigabit Managed Ethernet Switch with 4 gigabit SFP Combo and 4-10G SFP+

Technical Datasheet

Model	SP7500-24G4FC-4X-L2M+	
Hardware Specifications		
Connector	24* 10/100/1000BASE-T RJ45 auto MDI/MDIX ports 4* 1000 Base-X SFP Slots Combo	
Uplink port	4* 10G Base-X SFP+ Slots Extend	
Console	1 x RS232-to-RJ45 serial port (115200, 8, N, 1)	
LED Display	Power Indicator: PWR(green). Network Indicator: Link(green) SFP: Green	
Network Standard	IEEE802.3i 10 BASE-T	
	IEEE802.3u 100 BASE-TX	
	IEEE802.3ab/z 1000 BASE-TX	
	IEEE802.3x Flow Control	
	IEEE802.3az EEE	
Switch Architecture	Store and Forward	
Transmission model	IEEE802.3X full-duplex and Backpressure half-duplex	
Switch Performance	Backplane bandwidth	540Gbps
	Packet forwarding rate	132Mpps
	MAC address	32k
Power requirement	AC100-240V 50/60Hz	
ESD Protection	6KV ESD	
Dimension(W x D x H)	440 x 290 x 44.5mm(17.32in x 11.42in x 1.75in)	
Weight	<5kg	
Environment	Operating temperature: -20℃~55℃， operating humidity: 5%~95% Storage temperature: -40℃~75℃， storage humidity: 5%~95%	
Safety	FCC Part15 Class A,CE,RoHs	

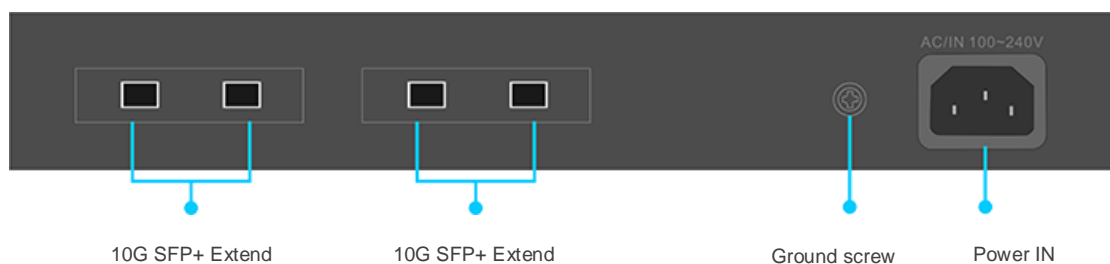
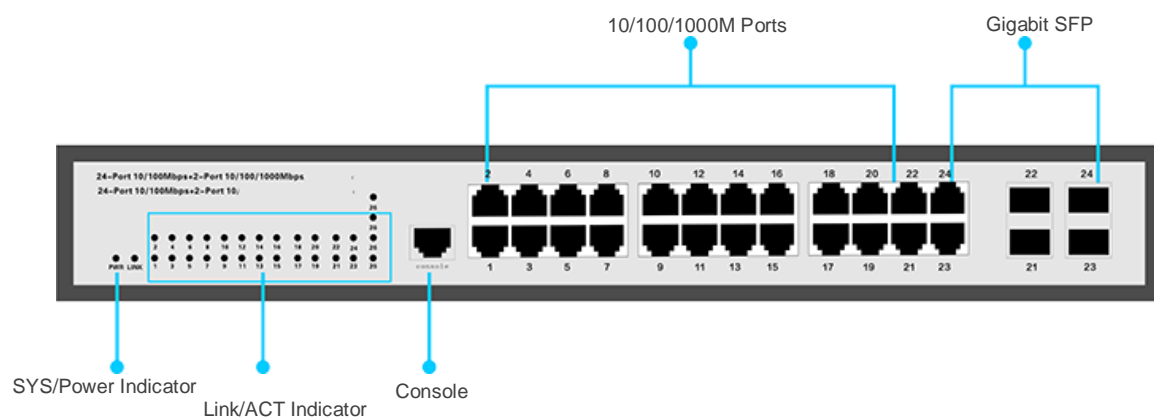
Layer 2 Functions		
Port Mirroring	TX / RX / both Many-to-1 monitor	
Vlan	802.1Q tagged-based VLAN	
	Up to 256 VLAN groups, out of 4094 VLAN IDs	
	802.1ad Q-in-Q tunneling	
	Voice VLAN;Protocol VLAN;Private VLAN (Protected port),GVRP	
Link Aggregation	IEEE 802.3ad LACP and static trunk	
	Supports 8 groups of 8-port trunk	
Spanning Tree Protocol	STP, IEEE 802.1D Spanning Tree Protocol	
	RSTP, IEEE 802.1w Rapid Spanning Tree Protocol	
	MSTP, IEEE 802.1s Multiple Spanning Tree Protocol	
IGMP Snooping	IGMP (v2/v3) snooping	
	IGMP querier	
	Up to 256 multicast groups	

MLD Snooping	MLD (v1/v2) snooping, up to 256 multicast groups
Access Control List	IPv4/IPv6 IP-based ACL / MAC-based ACL
Reliability	ERPS(G.8032)
IP Routing	Static Routing
QoS	8 mapping ID to 8 level priority queues --- Port number --- 802.1p priority --- 802.1Q VLAN tag --- DSCP field in IP packet Traffic classification based, strict priority and WRR
Security	IEEE 802.1X port-based authentication Built-in RADIUS client to co-operate with RADIUS server RADIUS / TACACS+ user access authentication IP-MAC port binding MAC filtering Static MAC address DHCP Snooping and DHCP Option82 STP BPDU guard, BPDU filtering and BPDU forwarding DoS attack prevention ARP inspection IP source guard
Management Function	
Basic Management Interfaces	Web browser / Telnet / SNMP v1, v2c, V3 Firmware upgrade by HTTP / TFTP protocol through Ethernet network Remote / Local Syslog, System log, LLDP protocol, SNMP
Secure Management Interfaces	SSH, SSL, SNMP
SNMP MIBs	RFC 1213 MIB-II RFC 1215 Generic Traps RFC 1493 Bridge MIB RFC 2674 Bridge MIB Extensions RFC 2737 Entity MIB (Version 2) RFC 2819 RMON (1, 2, 3, 9) RFC 2863 Interface Group MIB RFC 3635 Ethernet-like MIB

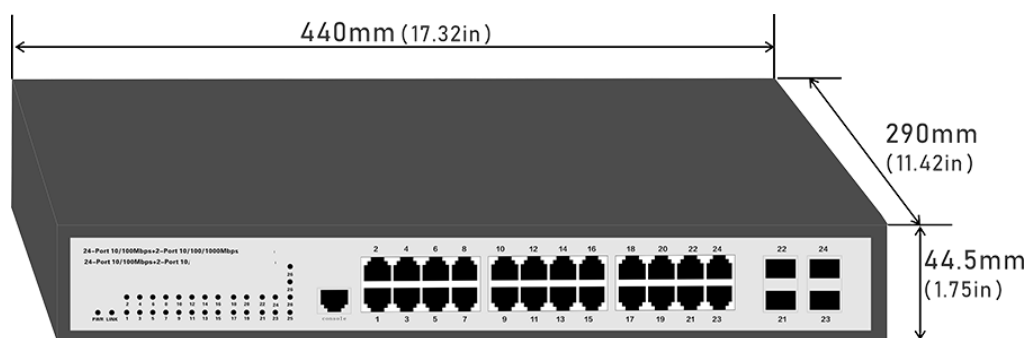
S7500-24G4CF-4X-L2M+

24 ports Gigabit Managed Ethernet Switch with 4 gigabit SFP Combo and 4-10G SFP+ Uplink

Interfaces



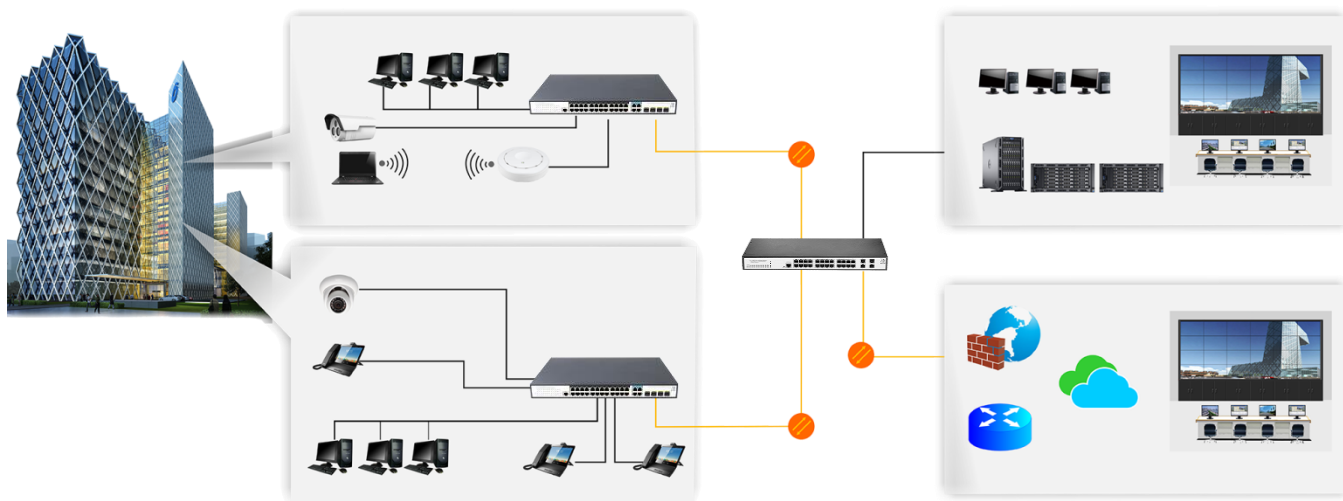
Structure Diagrams



S7500-24G4FC-4X-L2M+

24 ports Gigabit Managed Ethernet Switch with 4 gigabit SFP Combo and 4-10G SFP+ Uplink

Applications



Ordering Information

S7500-24G4FC-4X-L2M+

24 Ports 10/100/1000Mbps Managed switch with 4 Gigabit SFP Combo and 4-10G SFP+ Uplink, 6KV surge protection